

Place facility logo/header here

Procedure: Selection and Use of Personal Protective Equipment (PPE)

Date:

Revised Date:

Purpose: PPE is worn as part of Routine Practices to prevent transmission of microorganisms from patient-to-staff and from staff-to-patient.

1. General:

Appropriate personal protective equipment (PPE) is to be worn when exposure to blood or body fluids is anticipated. Selection of the appropriate PPE is based on risk assessment. PPE should be put on just prior to the interaction with the patient, removed immediately after the interaction has ended and disposed of in the appropriate receptacle.

PPE can be found _ (*insert storage location for PPE*) _____

2. Gloves:

- Clean hands before putting on gloves.
- Gloves should be put on immediately before the activity for which they are indicated and must be removed and discarded immediately after the activity for which they were used.
- Hand hygiene must be performed immediately after glove removal.
- Change or remove gloves if moving from a contaminated body site to a clean body site within the same patient.
- Do not wash or re-use gloves.
- The same pair of gloves must not be used for the care of more than one patient.

APPROPRIATE USE OF GLOVES

- Wear gloves for contact with mucous membranes, non-intact skin including undiagnosed rashes, blood, body fluids, secretions, excretions or equipment and environmental surfaces contaminated with any of these.
- Perform hand hygiene before putting on gloves.
- Remove gloves and discard immediately after the activity for which they were used. Do not re-use or wash gloves.
- Change gloves between care for each patient.
- Perform hand hygiene after gloves are removed due to possible contamination of hands during glove removal.



Figure 10: Putting on gloves

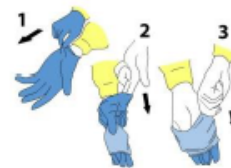


Figure 11: Taking off gloves

Appropriate Gown Use:

Place facility logo/header here

- Gowns should only be worn when providing care for patients.
- When use of a gown is indicated, the gown should be put on immediately before the task and must be worn properly, i.e., tied at top and around the waist.
- Remove gown immediately after the task for which it has been used in a manner that prevents contamination of clothing or skin and prevents agitation of the gown.
- Discard used gown immediately after removal into appropriate receptacle. Do not hang gowns for later use.
- Do not go from patient-to-patient wearing the same gown.

APPROPRIATE USE OF GOWNS

- Wear a gown or plastic apron when providing care that may contaminate skin or clothing with blood, body fluids, secretions or excretions.
- Put gown on immediately before the activity for which it is indicated.
- Wear gown properly, i.e., appropriately tied at neck and waist.
- Remove gown immediately after the activity for which it is used.
- Do not re-use gown.
- Perform hand hygiene after removing gown due to possible contamination of the hands during gown removal.



Figure 12: Putting on gown



Figure 13: Taking off gown

Appropriate Mask Use:

- Select a mask appropriate to the activity.
- Mask should securely cover the nose and mouth.
- Change mask if it becomes wet.
- Do not touch mask while wearing it.
- Remove mask correctly immediately after completion of task and discard into an appropriate waste receptacle.
- Do not allow mask to hang or dangle around the neck.
- Clean hands after removing the mask.
- Do not re-use disposable masks.
- Do not fold the mask or put it in a pocket for later use.

APPROPRIATE USE OF MASKS

- Put on mask immediately before the activity for which it is indicated.
- Secure mask over the nose and mouth.
- Remove mask immediately after the activity for which it is used.
- Change mask if it becomes wet.
- Do not touch mask while being worn.
- Do not allow mask to hang around the neck.
- Do not fold mask or store in a pocket.
- Do not re-use mask.
- Perform hand hygiene after removing mask

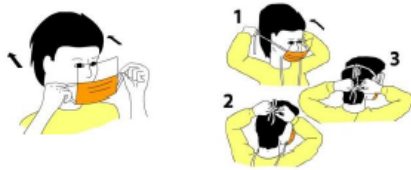


Figure 14: Putting on mask

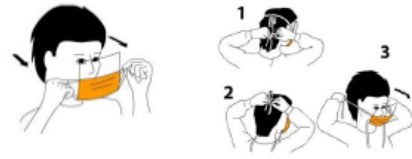


Figure 15: Taking off mask

Appropriate Use of Eye Protection:

- Eye protection should be used whenever there is a potential for splashes or sprays to the eyes.
- Eye protection must be removed immediately after the task for which it was used and discarded into waste or placed in an appropriate receptacle for cleaning.
- Prescription eye glasses are not acceptable as eye protection.

APPROPRIATE USE OF EYE PROTECTION

- Ensure eye protection is comfortable, fits securely and does not interfere with vision.
- Put on eye protection immediately before the activity for which it is indicated.
- Remove eye protection immediately after the activity for which it is used.
- Remove eye protection by grasping the side arms and pulling eye protection forward, without touching the front of the eyewear.
- Discard eye protection after use or place into an appropriate receptacle for cleaning and disinfection.



Figure 18: Putting on eye protection



Figure 19: Taking off eye protection

Place facility logo/header here

N95 RESPIRATORS

APPROPRIATE USE OF RESPIRATORS

- Put on respirator immediately before the activity for which it is indicated.
- Remove respirator as soon as it is safe to do so.
- Use only a fit-tested respirator.
- Perform a seal-check each time a respirator is applied.
- Change respirator if it becomes wet or soiled.
- Remove respirator correctly and discard immediately after use.
- Perform hand hygiene after removing the respirator.



Figure 16: Putting on respirator



Figure 17: Taking off respirator

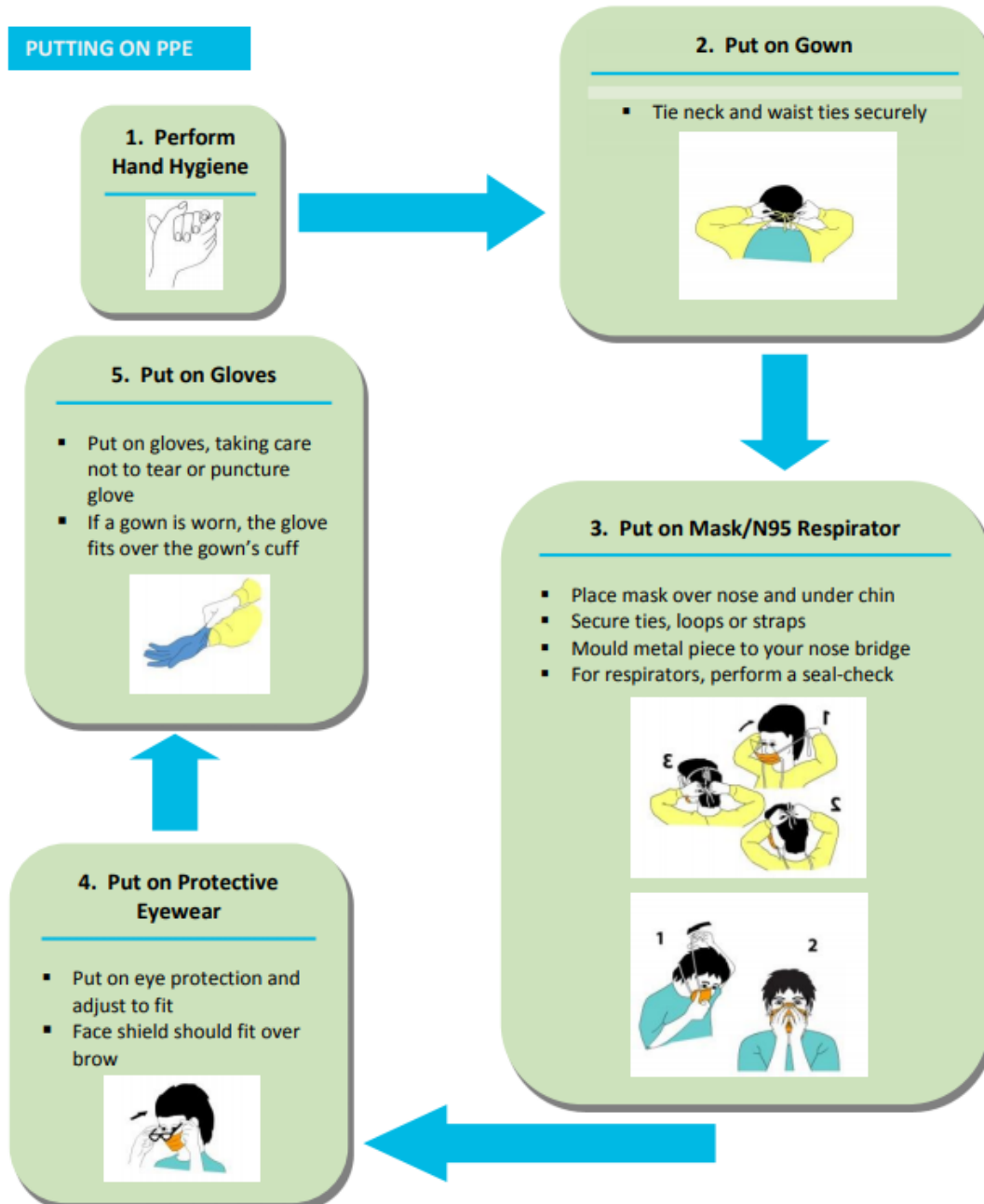
References:

1. Ontario Agency for Health Protection and Promotion (Public Health Ontario), Provincial Infectious Diseases Advisory Committee. Infection Prevention and Control for Clinical Office Practice. 1st Revision. Toronto, ON: Queen's Printer for Ontario; April 2015. https://www.publichealthontario.ca/en/eRepository/IPAC_Clinical_Office_Practice_2013.pdf
2. Ontario Agency for Health Protection and Promotion, Provincial Infectious Diseases Advisory Committee. Routine Practices and Additional Precautions in All Health Care Settings. 3rd edition. Toronto, ON: Queen's Printer for Ontario; November 2012. https://www.publichealthontario.ca/en/eRepository/RPAP_All_HealthCare_Settings_Eng2012.pdf

Place facility logo/header here

PPE must be donned and doffed using the following specific sequence to prevent contamination of healthcare workers and the environment.

Donning PPE:



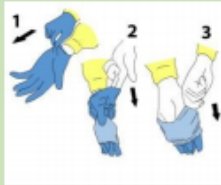
For more information please contact Public Health Ontario's Infection Prevention and Control Department at ipac@ohpp.ca or visit www.publichealthontario.ca

Doffing PPE:

TAKING OFF PPE

1. Remove Gloves

- Remove gloves using a glove-to-glove/skin-to-skin technique
- Grasp outside edge near the wrist and peel away, rolling the glove inside-out
- Reach under the second glove and peel away
- Discard immediately into waste receptacle



2. Remove Gown

- Remove gown in a manner that prevents contamination of clothing or skin
- Starting at the neck ties, the outer, 'contaminated', side of the gown is pulled forward and turned inward, rolled off the arms into a bundle, then discarded immediately in a manner that minimizes air disturbance



6. Perform Hand Hygiene

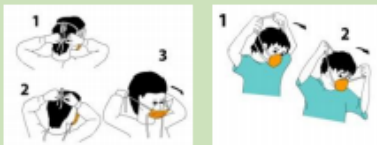


3. Perform Hand Hygiene



5. Remove Mask/N95 Respirator

- Ties/ear loops/straps are considered 'clean' and may be touched with hands
- The front of the mask/respirator is considered to be contaminated
- Untie bottom tie then top tie, or grasp straps or ear loops
- Pull forward off the head, bending forward to allow mask/respirator to fall away from the face
- Discard immediately into waste receptacle



4. Remove Eye Protection

- Arms of goggles and headband of face shields are considered to be 'clean' and may be touched with the hands
- The front of goggles/face shield is considered to be contaminated
- Remove eye protection by handling ear loops, sides or back only
- Discard into waste receptacle or into appropriate container to be sent for reprocessing
- Personally-owned eyewear may be cleaned by the individual after each use

